

Inner Mongolia

	Brief	03
	Sights	03
	Eating	08
	Notes	10
	Maps	11



① Hulunbuir Prairie
呼伦贝尔大草原



② Genghis Khan Mausoleum
成吉思汗陵



③ Arshan National Forest Park
阿尔山国家森林公园



④ Xiangsha Bay
响沙湾



⑤ Ejina Populus Euphratica Forest
额济纳胡杨林



⑥ Manchuria National Gate Scenic Area
满洲里国门景区



⑦ Xilingol Prairie
锡林郭勒大草原



⑧ Ulanbutong
乌兰布统

Brief

Inner Mongolia has a unique local customs and culture. The Mongolians are the main ethnic group here, and they are hospitable. When a guest visits, they will be treated with milk tea and dairy products. The yurts they live in are convenient for migration, showing the wisdom of nomadism. In terms of food, mutton and dairy products play the leading role, hand-pulled meat is tender and fragrant, and milk tea is mellow. The music and dance are full of vitality, long tunes are melodious, and grassland dances are unrestrained. The Nadam Festival is even more lively, showing the charm of folk customs.

Why Go Here

- Magnificent grassland scenery
- Rich folk culture
- Unique food
- Profound historical heritage
- Excellent natural ecology

Basic info

Time zone: CST (UTC+8)

Area code: +86/0471

Postal code: 010000

Language: Mandarin

Currency: RMB, called "Yuan", "Jiao", "Mao",

10 Jiao = 1 Yuan

Plug:  

Voltage: 220V

Frequency: 50 Hz

Currency conversion:

RMB: ¥

US dollars: 1 USD = 7.2559 RMB

1 RMB = 0.1378 USD



Police: 110

Medical Care: 120

Traffic Accident: 122

Fire Emergency: 119

Sights



Hulunbuir Grassland is located in the west of Hulunbuir City. June to September is the tourist season, which is suitable for self-driving. You can experience grassland life such as horse riding and watching performances, and visit the special attractions of Manzhouli. There are different beautiful scenery in different seasons, the local mutton is delicious, and there are many delicacies.

Address

S201, Chenbaerhu Banner, Hulunbuir City,
Inner Mongolia Autonomous Region 内蒙古自治区
呼伦贝尔市陈巴尔虎旗S201

Recommended play time: 18 days

Opening Hours

Open all year round

Transportation

- To go to Hulunbuir, you can take a plane to Hailar or Manchuria, and there are trains to Hailar Station in many cities. For local transportation, individual passengers can choose intercity buses. If there are many people or if you share a car, chartering is better. Chartering is divided into full-trip and sub-route, which can be negotiated by multiple parties.

Travel Season

- ⊙ June to September is the best time to visit Hulunbuir Prairie, and there are many activities in July and August. When traveling in summer, you need to pay attention to the temperature difference and mosquito prevention. Summer and winter have their own suitable travel periods.

② Genghis Khan Mausoleum 成吉思汗陵



The Mausoleum of Genghis Khan is located in the grassland of Ejin Horo Banner, Ordos, Inner Mongolia. It is actually a cenotaph. After several moves, it was moved back in 1954. It is a major attraction in Inner Mongolia. Its ceremony is grand and divided into many types of sacrifices, with the spring sacrifice being the largest.

Address

Ordos Grassland, Ejin Horo Banner, Ordos City, Inner Mongolia Autonomous Region
内蒙古自治区鄂尔多斯市伊金霍洛旗鄂尔多斯草原

Recommended play time: 3 hours

Opening Hours

07:30-18:30 (January 1-December 31, Monday-Sunday)

⑤ Arshan National Forest Park 阿尔山国家森林公园



Arxan National Forest Park is located in the Greater Khingan Mountains, with high peaks, large lakes, volcanic landforms such as Shitanglin and Tianchi, and unique mineral spring resources. The Grand Canyon in the park is a volcanic lava fault zone, Tuofengling Tianchi has a good original appearance, and when the flowers in Dujuan Lake bloom in spring, the wonder of snow reflecting flowers often appears.

Address

Tourism Road, Arxan City, Xing'an League,
Inner Mongolia Autonomous Region 内蒙古自
治区兴安盟阿尔山市旅游路

Recommended play time: 6 days

Opening Hours

08:00-17:00 all year round

Transportation

- Train: There are two trains departing from Ulanhot to Arxan every day. You can enjoy the forest scenery outside the window by taking the morning train, which is an express train with no berths; you can take the evening train to take pictures of the smoke rising from the Arxan forest area the next morning, which is a slow train with two berths.
- Chartering a car: Chartering a car is the best choice for visiting Arxan. Due to the uneven road conditions along the way, it is recommended to rent an off-road vehicle.

④ Whistling Dune Bay 响沙湾



Whistling Dune Bay is located at the eastern end of Kubuqi Desert in Dalate Banner, Ordos, Inner Mongolia. It is named after the sound of sand sliding or scooping. It is a 5A-level scenic spot integrating sightseeing and vacation, with many characteristic holiday islands distributed in the scenic area.

Address

Whistling Dune Bay Tourist Area, Dalate Banner, Ordos City, Inner Mongolia Autonomous Region 内蒙古自治区鄂尔多斯市达拉特旗响沙湾旅游景区

Recommended play time: 3 days

Opening Hours

08:30-18:00 all year round

Tips

◎ Things to note when visiting Whistling Dune Bay: Wear flat shoes when visiting, and keep your valuables safe when sandboarding; In summer, the temperature difference between day and night is large and the weather is changeable, so bring long sleeves and rain-coats to prevent heatstroke; Bring plenty of food and water, and use a backpack; As the ultraviolet rays in the desert are strong, take measures to prevent wind, sand and sun.

⑤ Ejina Populus Euphratica Forest 额济纳胡杨林



The Ejina Populus euphratica National Nature Reserve in Inner Mongolia is located in the Ejina Oasis, adjacent to Dalaihub Town in the west and the Juyan Lake in the north, covering an area of 26,253 square kilometers. This is the hometown of Populus euphratica, with different landscapes from the first to the eighth bridge. The desert at the eighth bridge is magnificent, and the facilities in the area are complete, making it a good place for sightseeing and entertainment.

Address

100 meters east of Yidaqiao, Dalaihub Town, Ejina Banner, Alxa League, Inner Mongolia Autonomous Region 内蒙古自治区阿拉善盟额济纳旗达来呼布镇一道桥东100米

Recommended play time: 3-6 days

Opening Hours

07:30-18:00 (January 1-December 31, Monday-Sunday)

Transportation

- ① From the Ejin Banner Town Government to Laikubu Town to the scenic area, there is no public transportation, so you can only take a taxi.
- ② There are free sightseeing buses in the scenic area, which travel between the Yidao Bridge and the Badao Bridge. There are many buses and they stop at every bridge. However, during peak hours, the flow of people is surging (especially the Erdao Bridge), and it takes physical strength and skills to squeeze into the bus.

Travel Season

- ◎ Autumn is the best time to travel to Ejina Banner. Early October is when the leaves of the poplars turn red. There are many sandstorms in spring and it is too cold in winter to be suitable for travel.

6 Manchuria National Gate Scenic Area 满洲里国门景区



The Manzhouli National Gate Scenic Area is a landmark tourist destination, including national gates, boundary monuments and other landscapes. The fifth-generation national gate has a unique style, with displays inside and national gates from past dynasties displayed in the surrounding square. There are also exhibition halls such as the Sixth National Congress of the Communist Party of China, and fighter jets and locomotives are on display in the scenic area.

Address

Near Wudao Street, Manzhouli City, Hulunbuir City, Inner Mongolia Autonomous Region 内蒙古自治区呼伦贝尔市满洲里市五道街附近

Recommended play time: 2 hours

Opening Hours

All year round 09:00-17:30

Transportation

- Take bus No. 10/6 of Manzhouli and get off at Guomen (bus station). It is within walking distance.

Travel Season

- ⊙ Manzhouli has different beautiful scenery in different seasons: July is suitable for viewing grasslands;
- ⊙ Mid-to-late September is the best time to enjoy the autumn colors;
- ⊙ From the end of June to the end of July, the Hulunbuir grassland is lush;
- ⊙ The grassland begins to turn yellow in early August;
- ⊙ The best time for winter ice and snow tours is from November to mid-February of the following year.

📍 Xilingol Prairie 锡林郭勒大草原



The grassland tourism resources are unique and complete. In midsummer, the Ujumqin grassland is lush and green, with peonies and rhododendrons competing for beauty, white clouds floating, herdsman, cattle and sheep, and yurts sketching a poetic picture; the cattle and sheep are looming on the Huitengxile grassland, and the Xilin River is winding like a Hada, which is intoxicating and unforgettable.

Address

Xilinhot City, Inner Mongolia Autonomous Region 内蒙古自治区锡林浩特市境内

Recommended play time: 1-2 days

Opening Hours

All day

Transportation

- Bus: There is a direct bus from Beijing Liliqiao Bus Station, and the journey takes about 12 hours.
- Train: Take a train from Beijing to Chifeng, Inner Mongolia, and then transfer to a mini-bus. The journey takes about 10 hours, and you can see the Darinor Lake and enjoy the grassland scenery along the way.

Travel Season

- ⊙ The best time to travel is summer every year, especially June, July, August and September, but you should be careful to protect yourself from rain; autumn and winter are relatively cold, so you should keep warm.

⑧ Ulan Butong Tourism Zone 乌兰布统旅游区



Ulan Butong Scenic Area is located in Keshketeng Banner. It is mainly based on natural landscapes. The scenery combines multiple landforms and is different in all seasons. It is a good place for film and television shooting and photography creation. There are also attractions such as Princess Lake and the Ancient Battlefield. The grassland scenery is beautiful and it is desirable.

Address

Chifeng City Keshketeng Banner Yuke Line
赤峰市克什克腾旗御克线

Recommended play time: 6 days

Opening Hours

Open all day all year round

Transportation

- After arriving in Ulan Butong, you can choose to drive by yourself or charter a car.

Travel Season

- ⊙ Summer is the best, and it is warm and humid at this time, with abundant rainfall, lush grass and trees growing, and the lake water increases, so the scenery is the best.

Eating

The food culture of Inner Mongolia is a unique movement created by the collision of grassland and nomadic civilization. From the tender and juicy hand-pulled mutton that fully demonstrates the grandeur of the grassland, to the mellow and fragrant Mongolian milk tea that warms the body and mind;

from the crispy and fragrant roasted lamb legs, to the rich and delicious mutton offal that warms the stomach and heart... Every delicacy carries the life wisdom of the grassland people and tells the vastness and deep affection of this land.

◆ Hand-pulled lamb 手扒羊肉

Hand-pulled mutton is the most rustic delicacy on the Inner Mongolia grassland. The tender mutton is boiled in plain water without adding too much seasoning, retaining the original meat aroma. Tear the fat and lean pieces of meat, dip them in the sauce, and the moment you take a bite, you will feel the grandeur and passion of the grassland blooming on your tongue.



◆ Mongolian Milk Tea 蒙古奶茶

A traditional Mongolian drink, it is made from boiled brick tea and mixed with fresh milk or goat milk, and then topped with butter, fried rice, etc. It has a strong flavor and is rich in nutrition. It can quench thirst and satisfy hunger.



◆ Roast Lamb Leg 烤羊腿

Inner Mongolia roasted lamb leg, carefully roasted over fruit wood charcoal, the skin is golden and crispy, sizzling with oil; the inside is tender and juicy, with a meaty aroma. Tear off a large piece, add cumin and chili, and eat it boldly, showing the grassland flavor and unrestrained passion.



◆ Shaomai 烧麦

In Inner Mongolia, siomai is a unique flavor that is engraved into the daily life of fireworks. The thin dough wraps the firm and delicious mutton filling and is pinched into a delicate pomegranate shape. A tray of steaming siomai is a soothing delicacy. After being steamed over a high fire, the top of the siomai slightly blooms, like a flower. Take a bite, the meat filling is tender and juicy, with the fragrance of green onions and the mellowness of spices, the dough is soft and chewy, and paired with a pot of brick tea to relieve the greasiness, it is full of satisfaction from the tip of the tongue to the stomach.



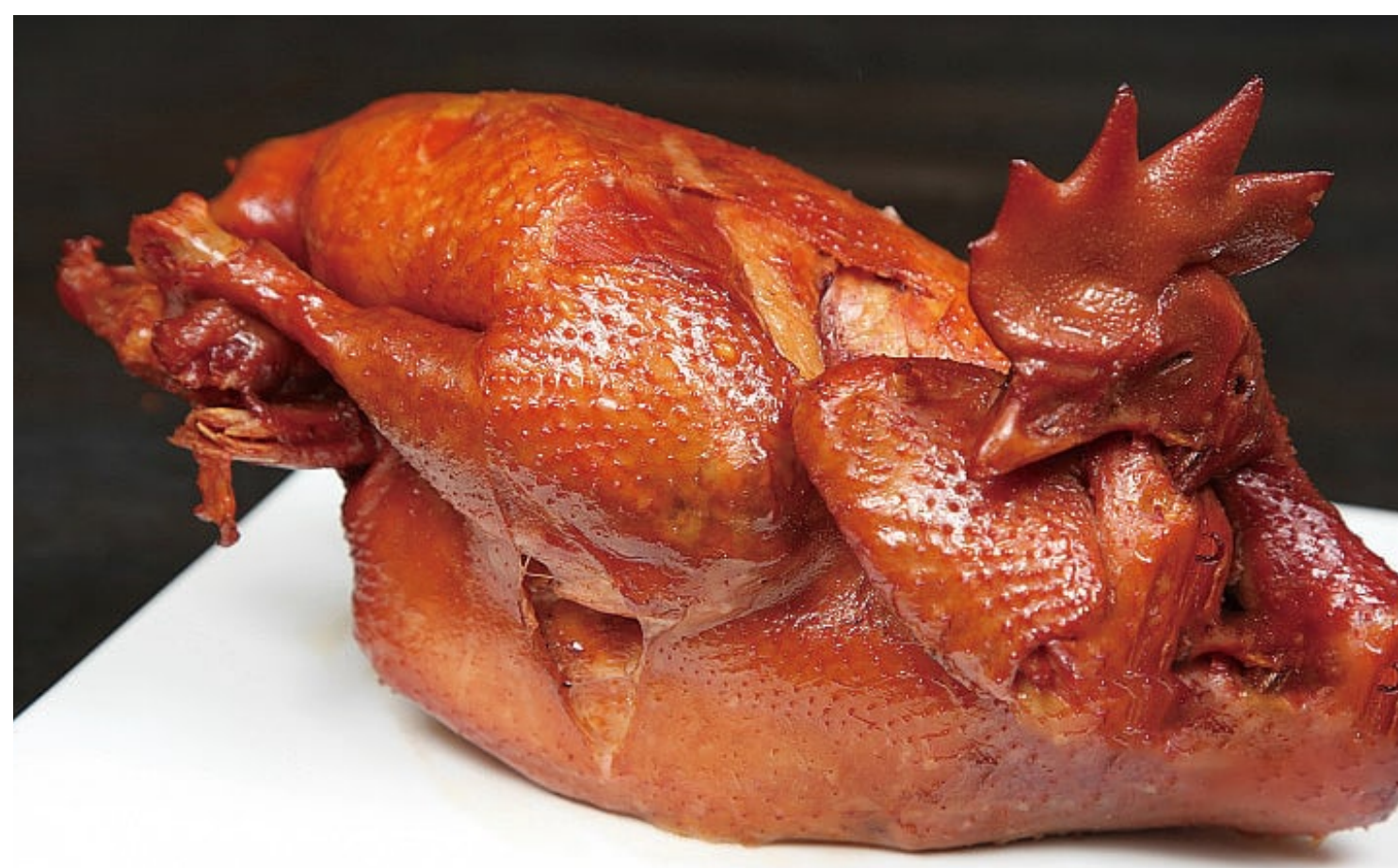
◆ Haggis 羊杂烩

It is made from sheep's head, sheep's hooves, sheep's heart, sheep's liver, sheep's lungs, sheep's intestines, etc., which are cooked and chopped, then added with onions, ginger, garlic, chilies and other seasonings. It tastes delicious and is rich in nutrition.



◆ Apricot Peel Water 杏皮水

Zhuozishan smoked chicken is the taste calling card of Ulanqab, Inner Mongolia. The local free-range chickens are carefully selected, marinated with secret spices, and then slowly stewed in old soup, so that the freshness and fragrance can penetrate into every fiber. After stewing, the chicken is smoked with cypress and fruit wood. The golden and shiny skin has an amber luster and is wrapped in a mellow smoked aroma. Tear off the skin, and the tender and juicy chicken is separated into strands, with moderate saltiness and fragrance, and full of chewiness. The more you chew, the more you can taste the unique grassland flavor.



Hospital

● The Affiliated Hospital of Inner Mongolia Medical University

内蒙古医科大学附属医院

Address: No. 1, Tongdao North Road, Huimin District, Hohhot City, Inner Mongolia Autonomous Region

Tel: 0471 - 3451350

Website: <https://www.nmgfy.com/>

Opening hours: 24 hours

● Inner Mongolia Autonomous Region People's Hospital 内蒙古自治区人民医院

Address: No. 20, Zhaowuda Road, Saihan District, Hohhot City, Inner Mongolia Autonomous Region

Tel: 0471 - 6620000

Website: <https://www.nmghospital.com/>

Opening hours: 24 hours

● Xing'an League People's Hospital 兴安盟人民医院

Address: No. 66, Hanshan West Street, Ulanhot City, Xing'an League, Inner Mongolia Autonomous Region

Tel: 0482 - 8413808

Website: <http://www.xamyy.com/>

Opening hours: 24 hours

Contact Us



+8613775219367
+8613915017585



cs@hellochinatrip.com



HelloChinaTrip.com



Inner Mongolia Attractions Map

